



MATERIAL HANDLING TECHNOLOGY SINCE 1946

# SGAI-C VSF I 30/2

*Datasheet*



**SELF-MOVED ELECTRONIC TRAILER, series SGAI-C VSF I 30/2, operator on board,**  
for factory material handling on concrete and good asphalt, flat and levelled floor

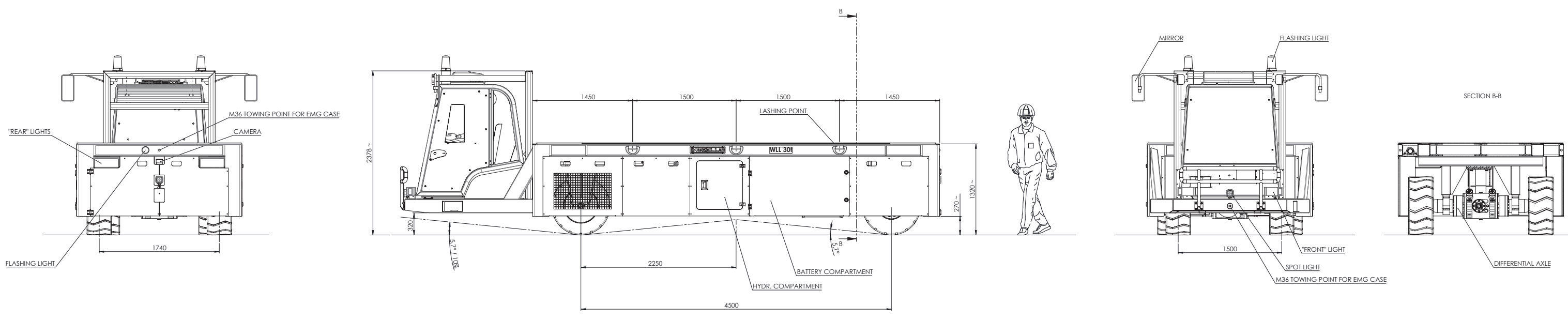
## TECHNICAL DATA

▪ Working Load Limit:	30 t evenly distributed
▪ Dead weight:	12.000 Kg approx.
▪ Loading platform dimensions:	length 5.900 mm approx. width 2.400 mm approx.
▪ Loading platform height:	1.350 mm approx. from ground
▪ Overall dimensions:	length 7.815 mm approx. width 2.400 mm approx.
▪ Ground clearance:	min. 200 mm
▪ Loading platform covering:	steel sheet
▪ N° axle lines:	2
▪ N° steering axle lines:	1
▪ Kind of wheels:	pneumatic
▪ N° wheels:	4
▪ N° driven wheels:	2
▪ Kind of steering:	front axle steering by +/- 45°
▪ Speed:	up to 5 km/h with full load
▪ Climbing ability:	3% approx. with full load
▪ Command:	completely closed driving cabin with heating and AC
▪ Power supply:	lithium battery 880 Ah 96 V
▪ Battery autonomy:	10 km of real operation (50% with full load + 50% without load)
▪ Supply voltage:	400 V – 50 Hz – 3ph
▪ Certifications:	2006/42/CE
▪ Documents language:	English

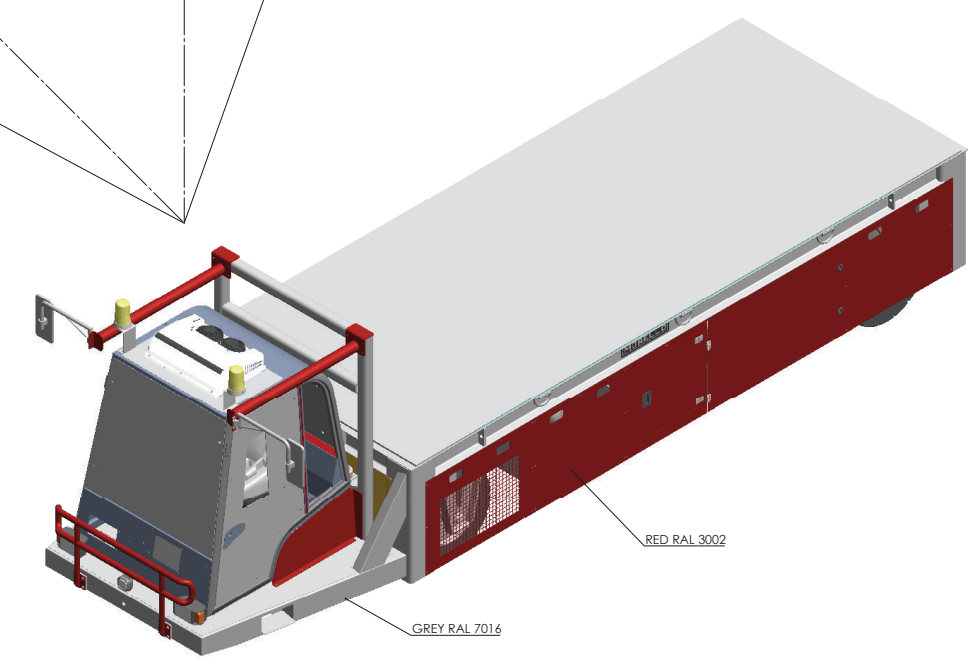
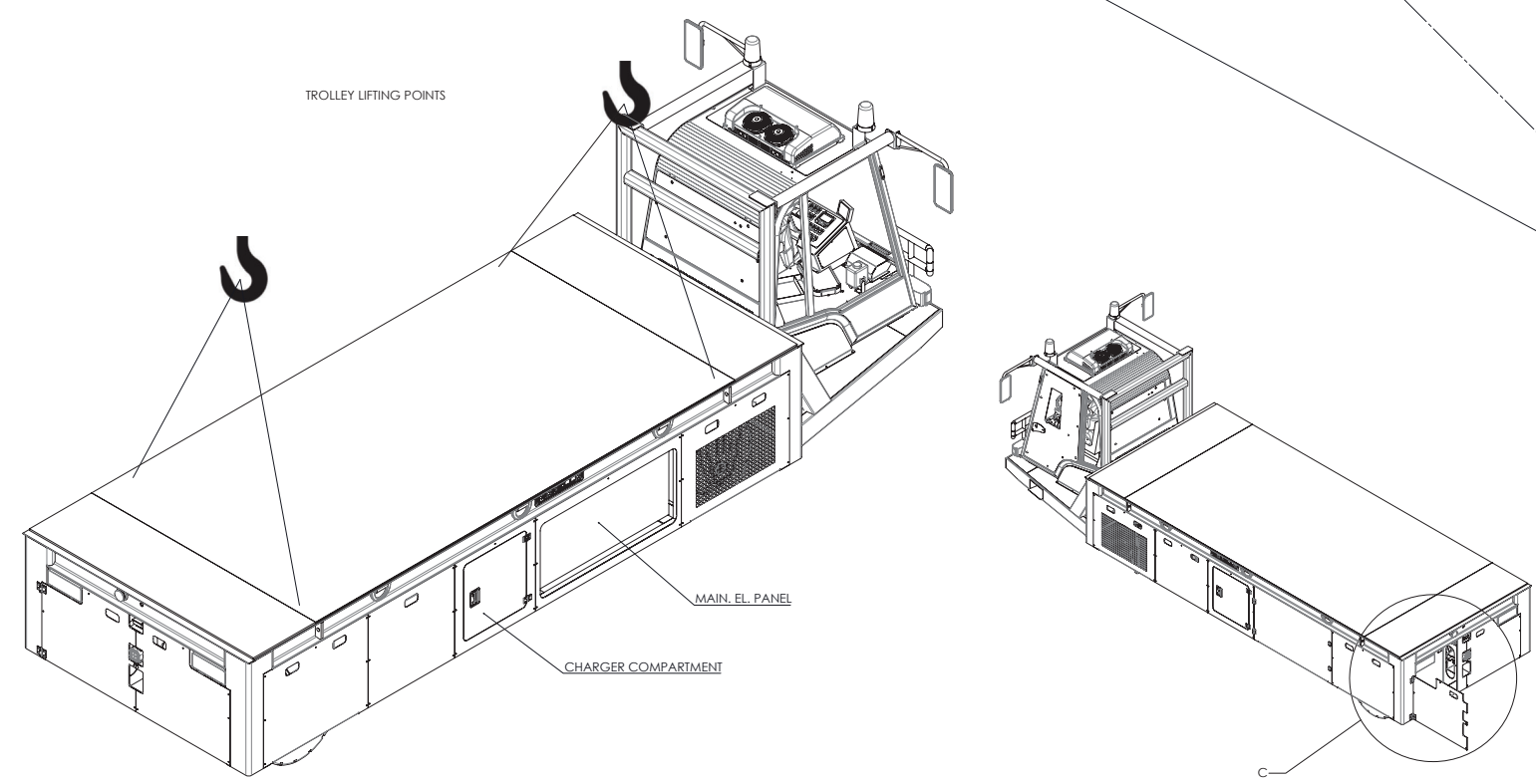
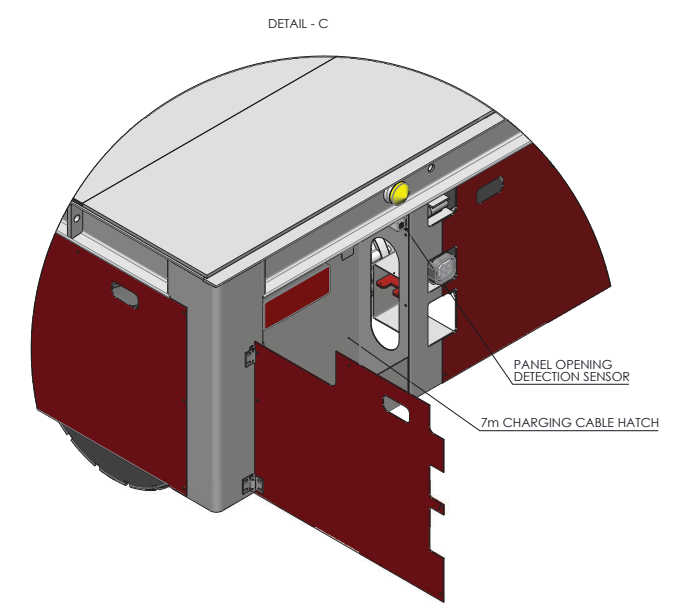
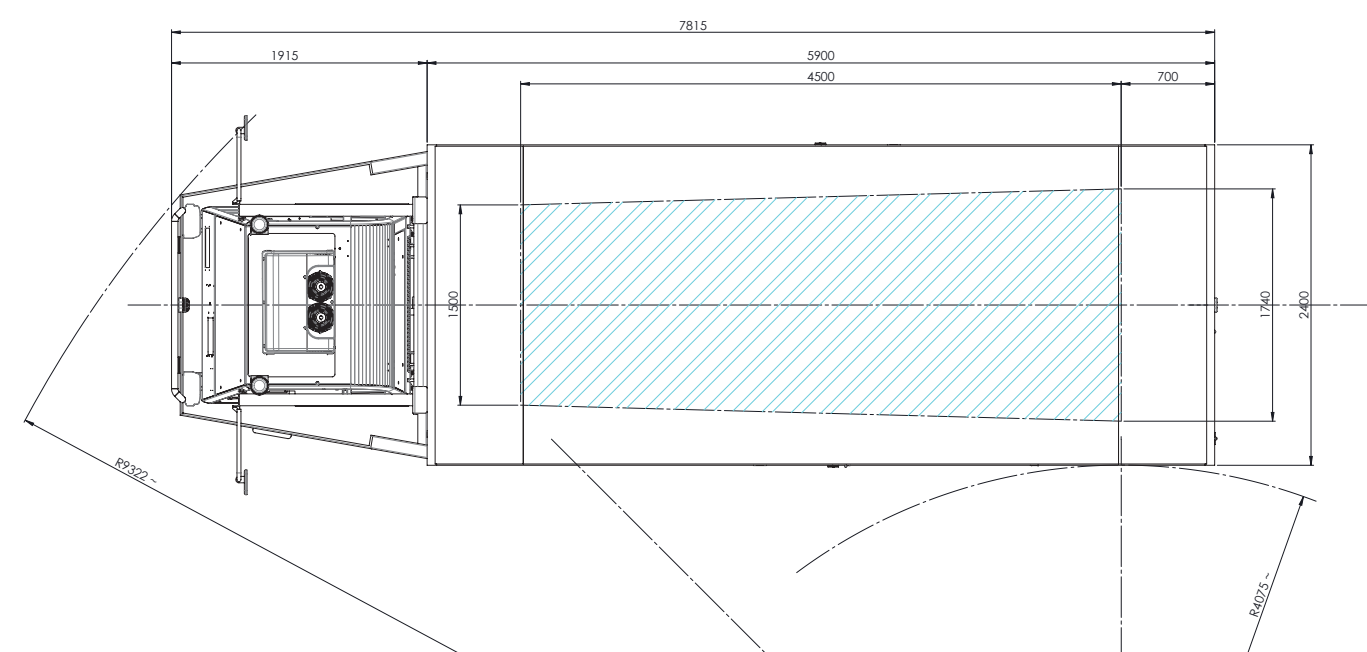
## WATCH HERE A SIMILAR TROLLEY VIDEO: [Video](#)

### Notes:

All pictures/drawings in this document are for illustrative purpose only. MORELLO S.r.l. it reserves the right to technical modification in order to improve the quality and reliability of the product Legal notes: this document is strictly confidential; it contains Morello's property confidential information, and it cannot be disclosed to third parties without Morello prior written approval. The offer above is exclusively limited to the specific case for which it has been requested and does not rise any right to similar or identical offers for other circumstances.



CHARACTERISTICS	
N. 4 PNEUMATIC WHEEL	355/65-15 - 32 RIM 9.7
N.1 REAR CAMERA	
N. 4 LIFTING POINT	
N.2 M36 TOWING POINT FOR EMG CASE	
N. 1 MOTORE DI TRAZIONE AC	96V 40Kw 1500rpm IP65
N.1 MOTOR-PUMP AC	10Kw 96V 2200rpm IP 65
N. 2 FLASHING LIGHT	
N.2 SPOT LIGHTS	
N. 1 Li BATTERY	96V 880Ah
N. 1 ONBOARD CHARGER	
- POWER	400V 50Hz 3ph
- PLUG	GEWISS GW60460 3ph (3ph+T), 125A
N.6 LASHING POINT D-RING	MBL 36T
ACOUTIC SIGNAL SIGNALLING "TRAILER IN MOTION"	
MAXIMUM SPEED	5 km/h
MAXIMUM SUPERABLE SLOPE	10%
DEADLOAD	~ 12.000 Kg
COLOUR	RED RAL 3002 AND GREY RAL 7016



**MORELLO**

INNER TRANSPORTATION TECHNOLOGY

Lgo Dora Colletta 85/A  
10153 Torino (Italy)  
Tel. 011/2480569 - Fax 850085

e-mail: info@morellogiovanni.it  
http://www.morellogiovanni.it

PROJECT:  
**TROLLEY SERIES SGAI C VSF I 30/2**

Dim. : 5.900 x 2.400 mm

Payload 30t

DESCRIPTION:  
**Assembly Drawing**

Rev. 03	02/02/2023	CAMBIO COLORE DA GIALLO RAL 1018 A ROSSO RAL 3002	A.T.O.
DESIGNER			
DATE	27/01/2025		
SCALE	1:20		